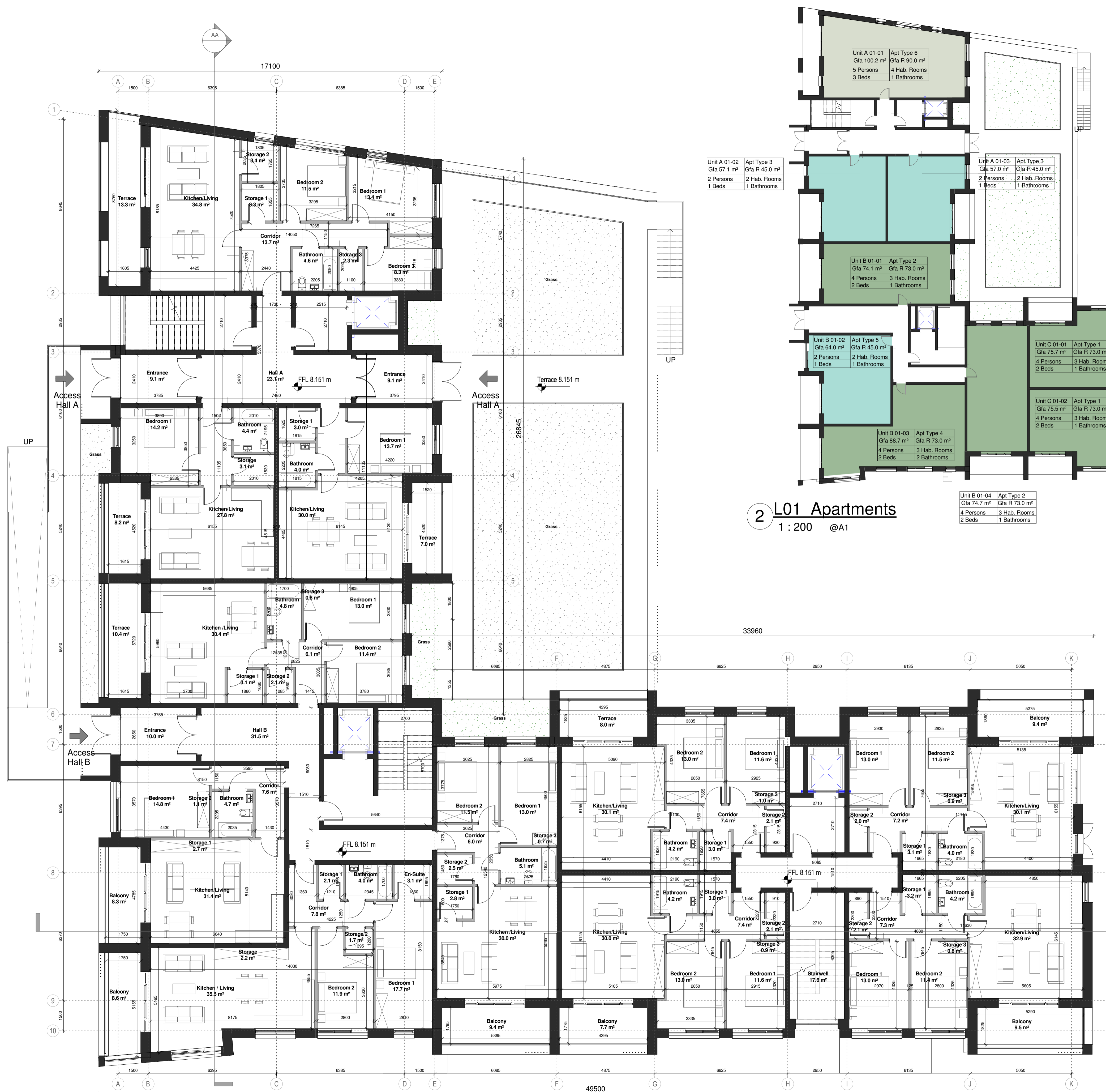
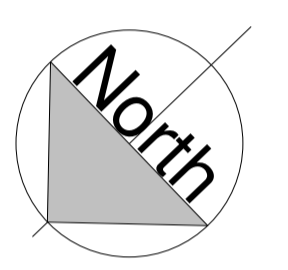
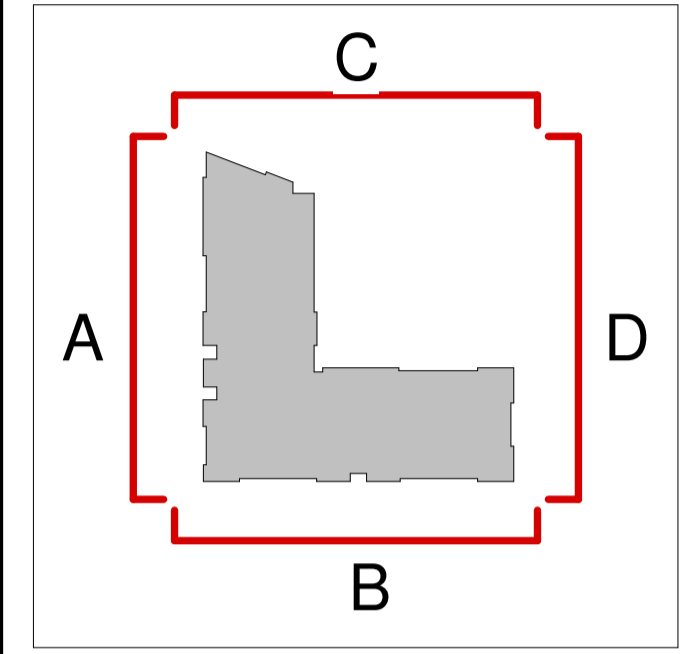
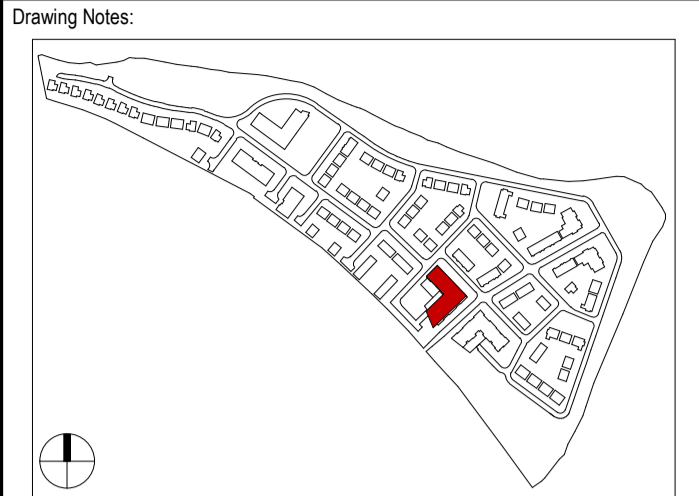


Notes:  
DO NOT SCALE FROM THIS DRAWING. USE FIGURED DIMENSIONS IN ALL CASES. VERIFY DIMENSIONS ON SITE AND REPORT ANY DISCREPANCIES TO THE ARCHITECTS IMMEDIATELY. THIS DRAWING IS TO BE READ IN CONJUNCTION WITH THE ARCHITECTS SPECIFICATION. © THIS DRAWING IS COPYRIGHT AND MAY ONLY BE REPRODUCED WITH THE ARCHITECTS PERMISSION.



2 L01 Apartments  
1 : 200 @A1

L01_A Apartment Type Schedule					
Apartment Number	Apartment Type	Level	Area	Area Required	Surplus/Deficit
A 01-01	6	L01	100.2 m <sup>2</sup>	90.0 m <sup>2</sup>	10.2 m <sup>2</sup>
A 01-02	3	L01	57.1 m <sup>2</sup>	45.0 m <sup>2</sup>	12.1 m <sup>2</sup>
A 01-03	3	L01	57.0 m <sup>2</sup>	45.0 m <sup>2</sup>	12.0 m <sup>2</sup>
B 01-01	2	L01	74.1 m <sup>2</sup>	73.0 m <sup>2</sup>	1.1 m <sup>2</sup>
B 01-02	5	L01	64.0 m <sup>2</sup>	45.0 m <sup>2</sup>	19.0 m <sup>2</sup>
B 01-03	4	L01	88.7 m <sup>2</sup>	73.0 m <sup>2</sup>	15.7 m <sup>2</sup>
B 01-04	2	L01	74.7 m <sup>2</sup>	73.0 m <sup>2</sup>	1.7 m <sup>2</sup>
C 01-01	1	L01	75.7 m <sup>2</sup>	73.0 m <sup>2</sup>	2.7 m <sup>2</sup>
C 01-02	1	L01	75.5 m <sup>2</sup>	73.0 m <sup>2</sup>	2.5 m <sup>2</sup>
C 01-03	1	L01	78.0 m <sup>2</sup>	73.0 m <sup>2</sup>	5.0 m <sup>2</sup>
C 01-04	1	L01	75.1 m <sup>2</sup>	73.0 m <sup>2</sup>	2.1 m <sup>2</sup>

1 L01 PROPOSED FIRST FLOOR PLAN  
1 : 100 @A1

P03.04 13.03.18 | BLR | Issued to Planning Consultant for Review  
P03.03 02.02.18 | PJK | Issued To Planning Consultant For Review  
P03.02 25.01.18 | MFG | Issued For Client Review Meeting  
P03.01 18.08.17 | MFG | Issued for Planning

Rev	Date	DRN	Description



Client Details:  
William Neville & Sons

Project Details:  
Carcur Park  
Wexford

Drawing Title:  
Apartment Block 3\_L01\_First Floor Level

Job No	Date	Scale@A1
P15-209K	18.08.17	As indicated
Status	Drawn By	Checked By
S10 - Issued for Planning	PJK	BLR
Purpose	Checked By	Checked By
3.0 Planning	BLR	BLR

Drawing Number	Revision
P15-209K-RAU-10-01-DR-A-31001	P03.04